

Report No.:

Test Time: 2025/12/25 19:24:52

## LUMINAIRE PHOTOMETRIC TEST REPORT

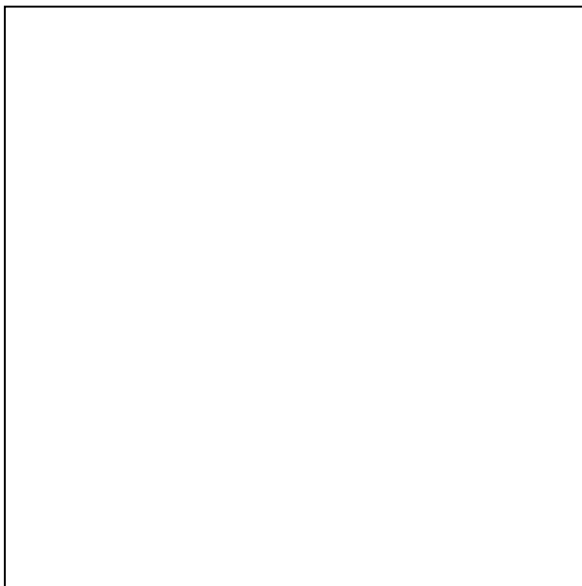
### Luminaire Property

Manufacturer: 0	Voltage(V): 221.04 V
Luminaire Type: U-D921-COB2-6W-3000K-15°	Current(A): 0.0484 A
Lamp Type:	Power(W): 6.65 W
Luminous Width: 57 mm	Power Factor: 0.6219
Luminous Length: 57 mm	Lamp Luminous Flux: 455.48
Luminous Height: 56 mm	

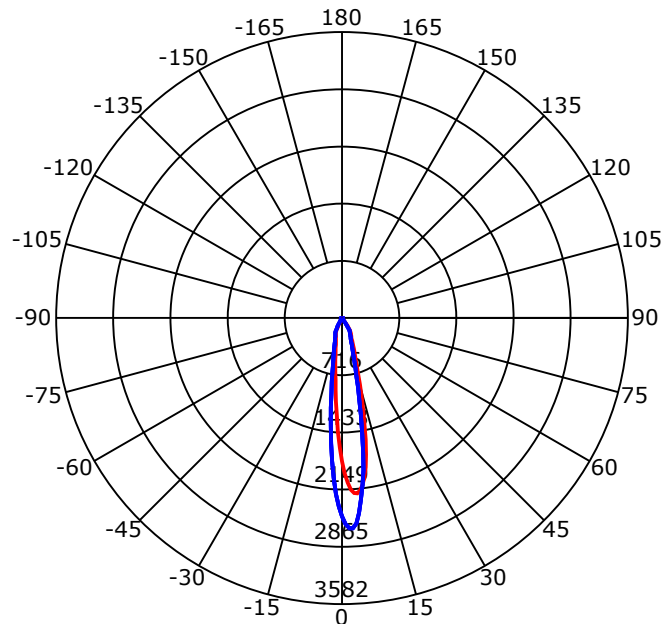
### Photometric Results

CIE Class: Direct	Max. Intensity: 2865.31 cd
Luminaire Luminous Flux: 455.4842 lm	Max.Intensity Angle: C=45 Gamma=3
Downward Ratio: 100.00%	Upward Ratio: 0.00%
Luminaire Efficacy Rating(LER): 68.49 lm/W	Efficacy: 100.00%
Beam Angle(50%) C0-180,C90-270: 17.2,16.8	Center Intensity: 1796.14 cd
Field Angle(10%) C0-180,C90-270: 50.4,43.2	Effective Luminous Flux: 313.90 lm
S/MH C0-180,C90-270: 0.425,0.389	ERP(φuse)(120deg): 447.42 lm

Picture of Luminaire



Luminous Intensity Distribution Curve



Beam Angle(50%) C0-180,C90-270: 17.2 deg,16.8 deg

C0-180 ——— C90-270 ———

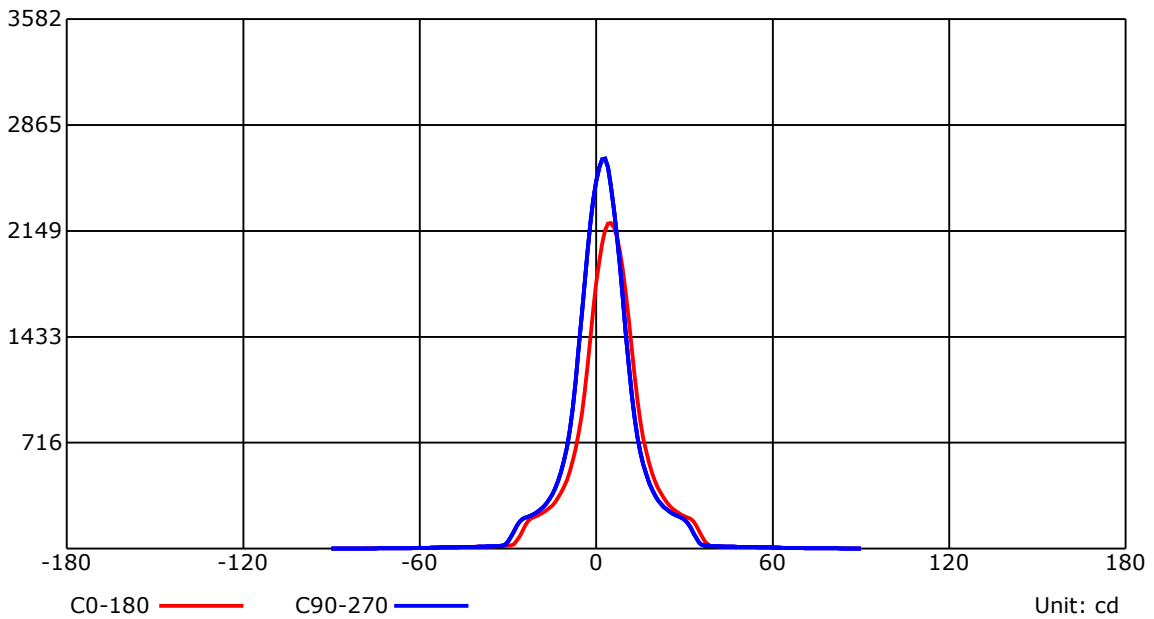
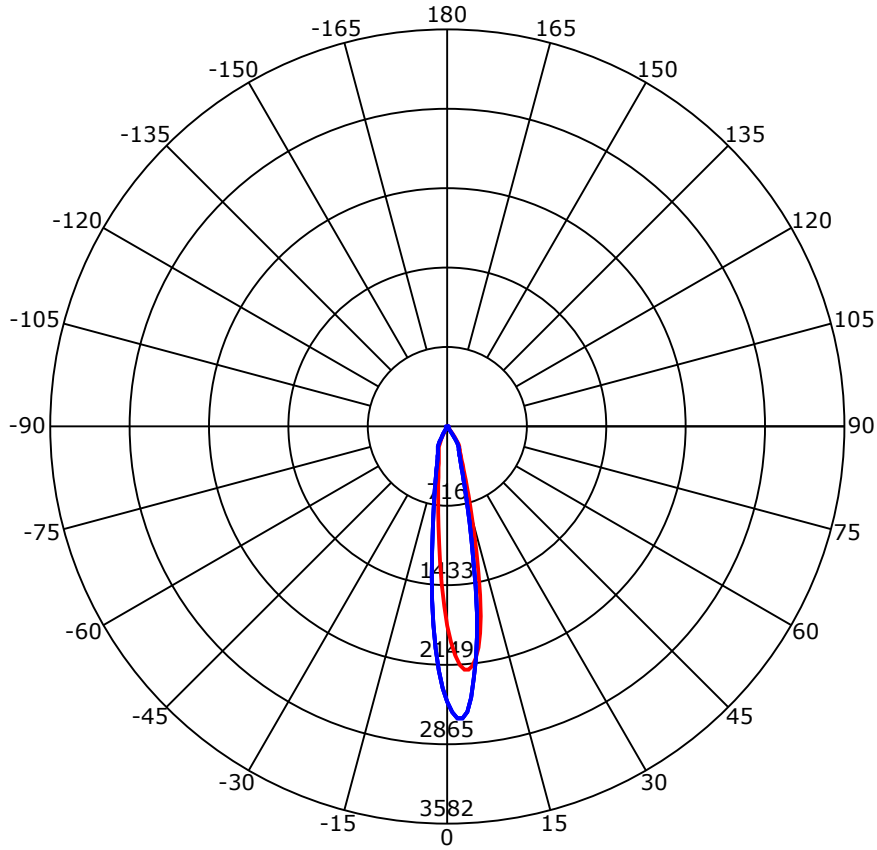
C Range: 0 - 360 Deg  
C Interval: 45.0 Deg  
Test Speed: High  
Temperature:  
Operators:  
Test Date: 2025/12/25 19:24:52

G Range: 0 - 90 Deg  
G Interval: 1.0 Deg  
Test System: Huipu CPM-2000B Goniophotometer  
Humidity:  
Test Distance: 7.91 m  
Remarks:

Report No.:

Test Time: 2025/12/25 19:24:52

### Luminous Intensity Distribution Curve



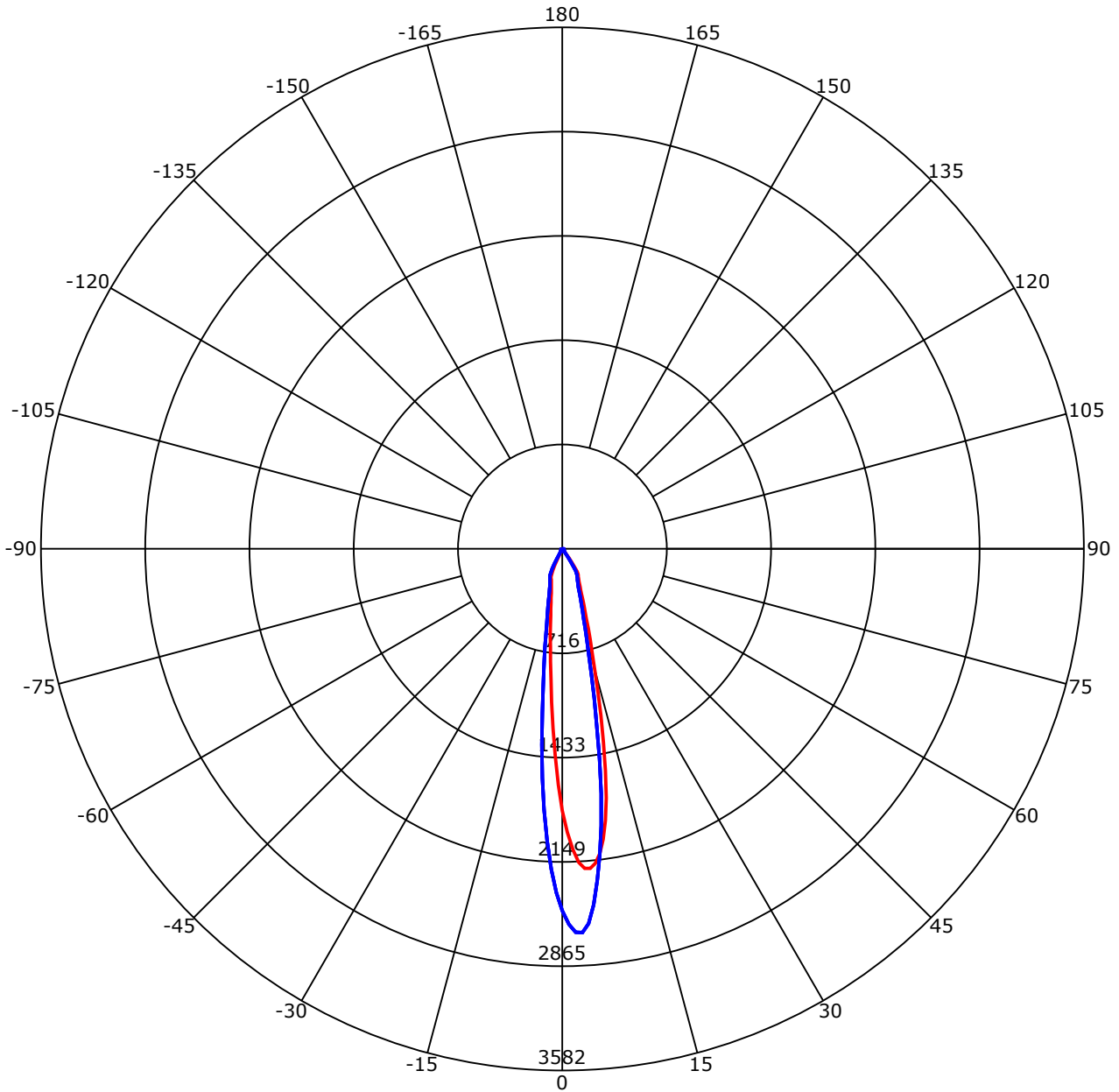
C Range: 0 - 360 Deg  
C Interval: 45.0 Deg  
Test Speed: High  
Temperature:  
Operators:  
Test Date: 2025/12/25 19:24:52

G Range: 0 - 90 Deg  
G Interval: 1.0 Deg  
Test System: Huipu CPM-2000B Goniophotometer  
Humidity:  
Test Distance: 7.91 m  
Remarks:

Report No.:

Test Time: 2025/12/25 19:24:52

## Luminous Intensity Distribution Curve



C0-180 — C90-270 —  
Unit: cd/klm

C Range: 0 - 360 Deg  
C Interval: 45.0 Deg  
Test Speed: High  
Temperature:  
Operators:  
Test Date: 2025/12/25 19:24:52

G Range: 0 - 90 Deg  
G Interval: 1.0 Deg  
Test System: Huipu CPM-2000B Goniophotometer  
Humidity:  
Test Distance: 7.91 m  
Remarks:

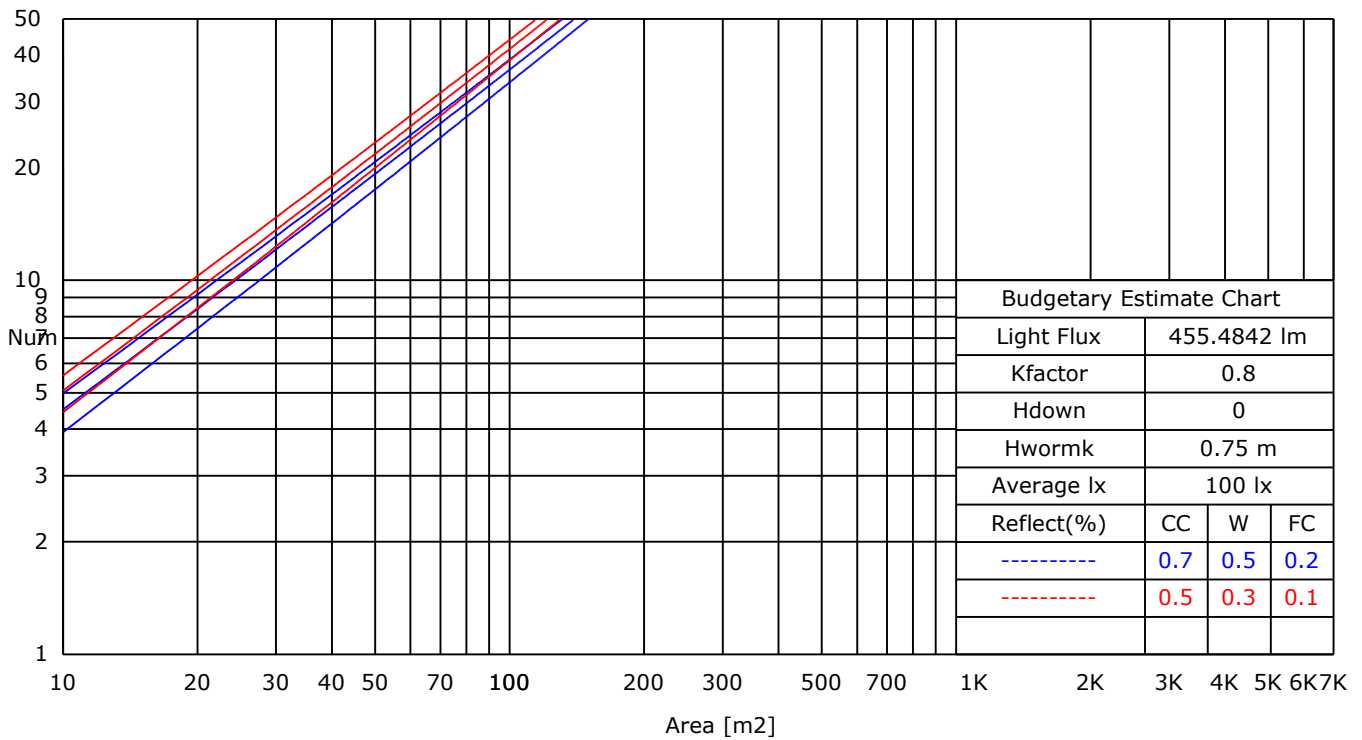
Report No.:

Test Time: 2025/12/25 19:24:52

### UTILIZATION FACTORS TABLE

RHOCC	80			70			50			30			10			0
RHOW	50	30	10	50	30	10	50	30	10	50	30	10	50	30	10	0
RCR	COEFFICIENTS OF UTILIZATION FOR RHOFC=20															
0	1.19	1.19	1.19	1.16	1.16	1.16	1.11	1.11	1.11	1.06	1.06	1.06	1.02	1.02	1.02	1.00
1	0.86	0.82	0.79	0.85	0.81	0.78	0.83	0.79	0.75	0.80	0.75	0.71	0.75	0.70	0.66	0.61
2	0.81	0.78	0.76	0.81	0.77	0.75	0.80	0.75	0.72	0.77	0.72	0.68	0.73	0.68	0.64	0.59
3	0.78	0.75	0.73	0.78	0.74	0.72	0.77	0.72	0.69	0.74	0.69	0.66	0.71	0.66	0.61	0.57
4	0.75	0.73	0.71	0.75	0.72	0.70	0.74	0.70	0.67	0.72	0.67	0.63	0.69	0.64	0.60	0.56
5	0.73	0.71	0.69	0.73	0.70	0.68	0.72	0.68	0.65	0.70	0.65	0.62	0.67	0.62	0.58	0.54
6	0.71	0.69	0.67	0.71	0.68	0.66	0.69	0.66	0.63	0.68	0.63	0.60	0.66	0.61	0.56	0.53
7	0.69	0.67	0.66	0.69	0.66	0.64	0.68	0.64	0.61	0.66	0.62	0.58	0.64	0.59	0.55	0.52
8	0.67	0.66	0.64	0.67	0.65	0.63	0.66	0.62	0.60	0.64	0.60	0.57	0.63	0.58	0.54	0.51
9	0.66	0.64	0.63	0.65	0.63	0.62	0.64	0.61	0.59	0.63	0.59	0.56	0.61	0.56	0.53	0.50
10	0.64	0.63	0.62	0.64	0.62	0.61	0.63	0.60	0.58	0.62	0.58	0.55	0.60	0.55	0.52	0.49

### LUMINAIRE BUDGETARY ESTIMATE DIAGRAM



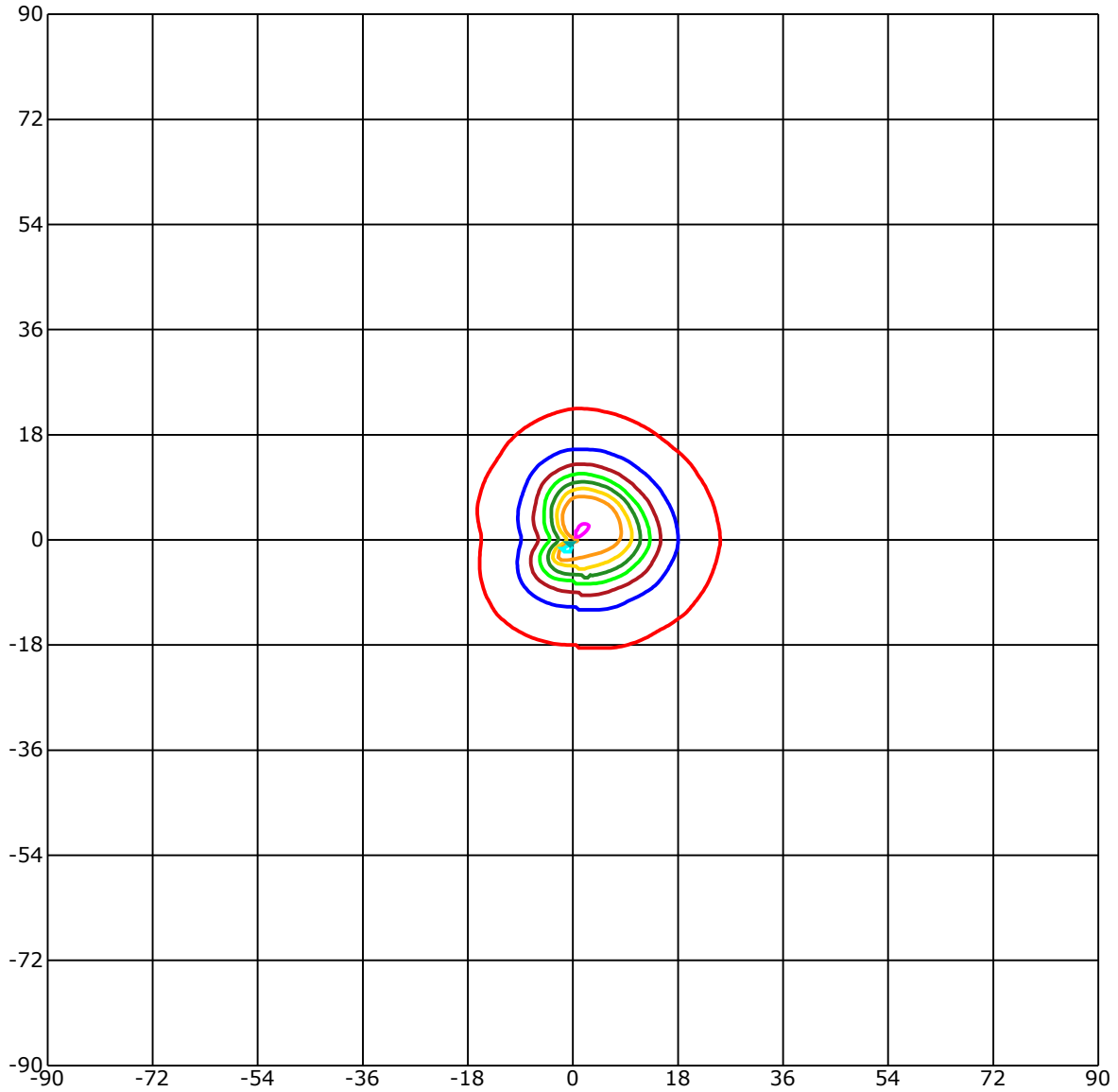
C Range: 0 - 360 Deg  
 C Interval: 45.0 Deg  
 Test Speed: High  
 Temperature:  
 Operators:  
 Test Date: 2025/12/25 19:24:52

G Range: 0 - 90 Deg  
 G Interval: 1.0 Deg  
 Test System: Huipu CPM-2000B Goniophotometer  
 Humidity:  
 Test Distance: 7.91 m  
 Remarks:

Report No.:

Test Time: 2025/12/25 19:24:52

## ISOCANDELA DIAGRAM (RECTANGULAR)



Unit of intensity:cd     $I_{max}(100\%)$ : 2865.306 cd

— 2722.041(95% $I_{max}$ )	— 1432.653(50% $I_{max}$ )
— 2578.775(90% $I_{max}$ )	— 1146.122(40% $I_{max}$ )
— 2292.245(80% $I_{max}$ )	— 859.592(30% $I_{max}$ )
— 2005.714(70% $I_{max}$ )	— 573.061(20% $I_{max}$ )
— 1719.184(60% $I_{max}$ )	— 286.531(10% $I_{max}$ )

C Range: 0 - 360 Deg

C Interval: 45.0 Deg

Test Speed: High

Temperature:

Operators:

Test Date: 2025/12/25 19:24:52

G Range: 0 - 90 Deg

G Interval: 1.0 Deg

Test System: Huipu CPM-2000B Goniophotometer

Humidity:

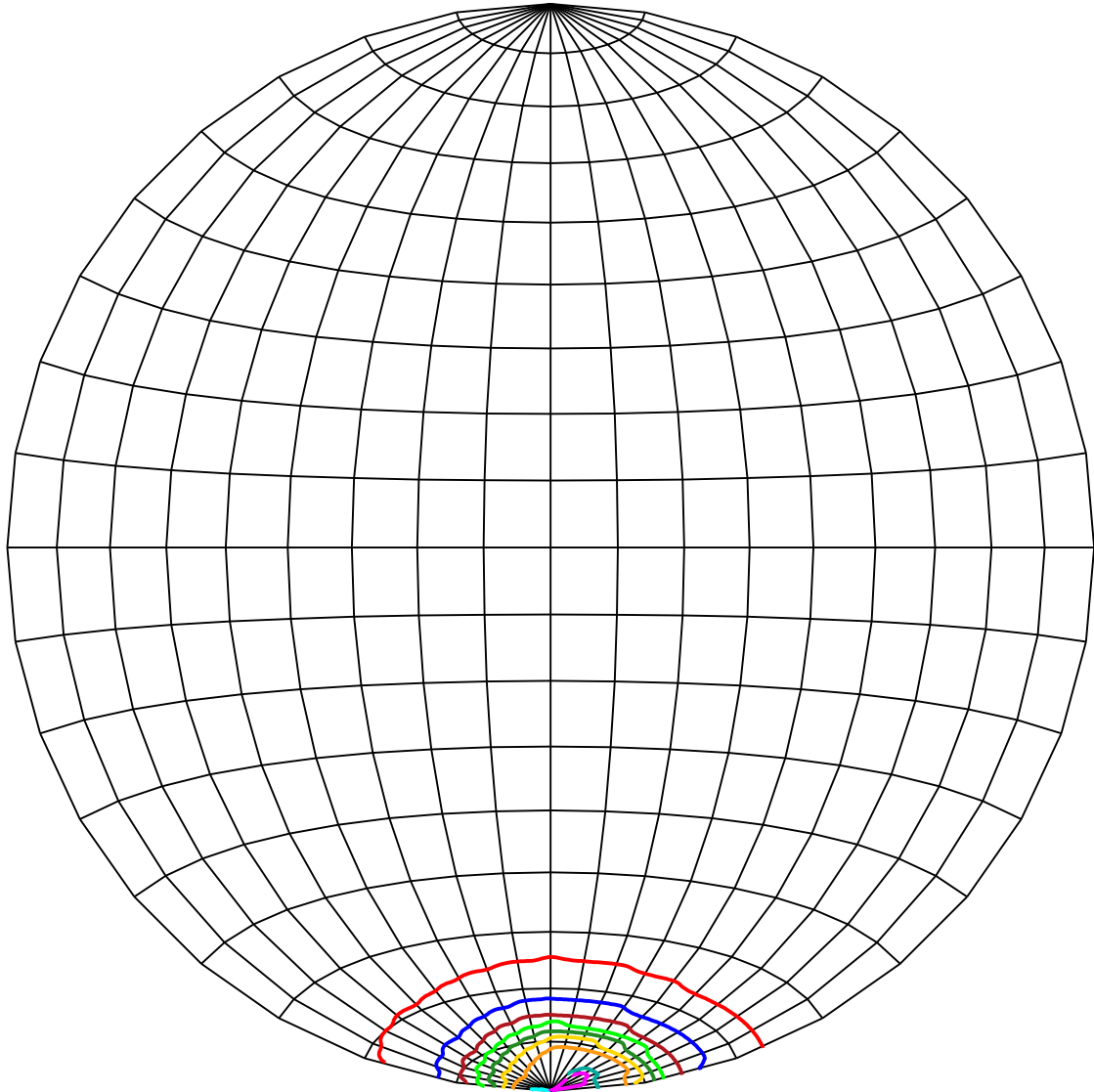
Test Distance: 7.91 m

Remarks:

Report No.:

Test Time: 2025/12/25 19:24:52

## ISOCANDELA DIAGRAM (SPHERE)



Unit of intensity:cd     $I_{max}(100\%)$ : 2865.306 cd

— 2722.041(95% $I_{max}$ )	— 1432.653(50% $I_{max}$ )
— 2578.775(90% $I_{max}$ )	— 1146.122(40% $I_{max}$ )
— 2292.245(80% $I_{max}$ )	— 859.592(30% $I_{max}$ )
— 2005.714(70% $I_{max}$ )	— 573.061(20% $I_{max}$ )
— 1719.184(60% $I_{max}$ )	— 286.531(10% $I_{max}$ )

C Range: 0 - 360 Deg

C Interval: 45.0 Deg

Test Speed: High

Temperature:

Operators:

Test Date: 2025/12/25 19:24:52

G Range: 0 - 90 Deg

G Interval: 1.0 Deg

Test System: Huipu CPM-2000B Goniophotometer

Humidity:

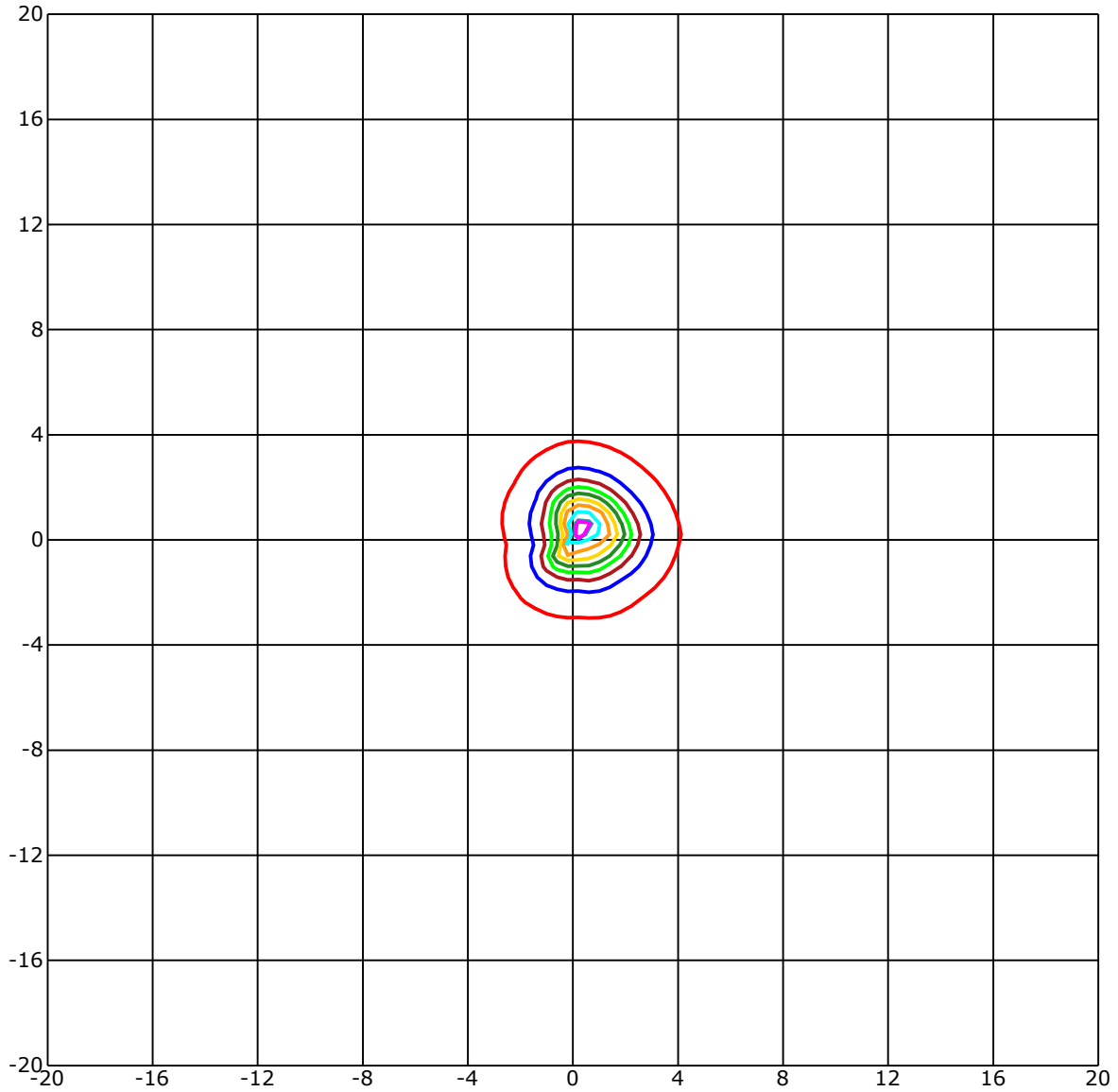
Test Distance: 7.91 m

Remarks:

Report No.:

Test Time: 2025/12/25 19:24:52

## ISOLX DIAGRAM



Unit of illumination:lx      Height of plane:10.0(m)/32.81(ft)

— 26.311(92%Emax)	— 14.299(50%Emax)
— 25.739(90%Emax)	— 11.44(40%Emax)
— 22.879(80%Emax)	— 8.58(30%Emax)
— 20.019(70%Emax)	— 5.72(20%Emax)
— 17.159(60%Emax)	— 2.86(10%Emax)

C Range: 0 - 360 Deg

C Interval: 45.0 Deg

Test Speed: High

Temperature:

Operators:

Test Date: 2025/12/25 19:24:52

G Range: 0 - 90 Deg

G Interval: 1.0 Deg

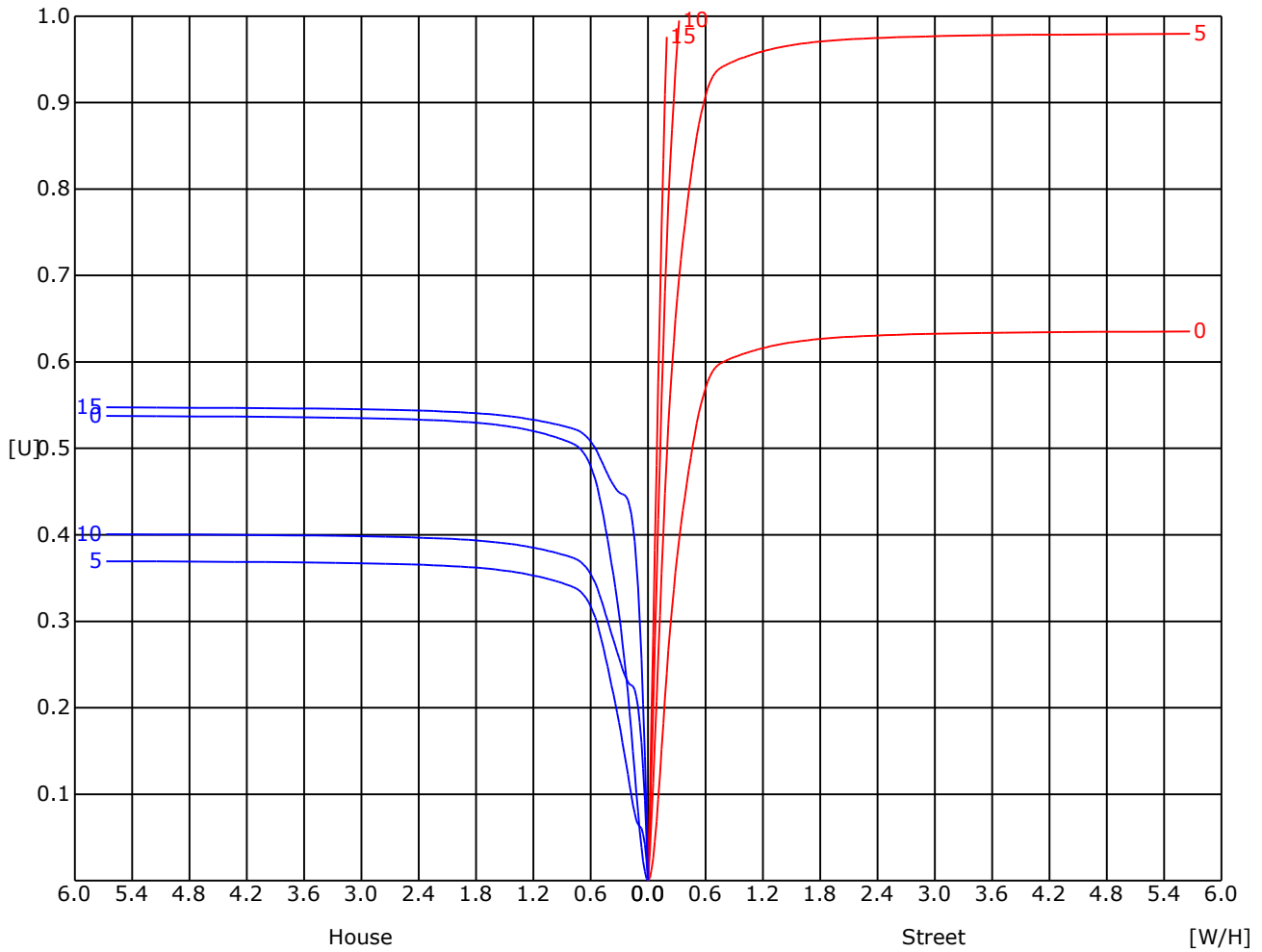
Test System: Huipu CPM-2000B Goniophotometer

Humidity:

Test Distance: 7.91 m

Remarks:

## UTILIZATION FACTOR DIAGRAM (ROAD)



C Range: 0 - 360 Deg  
 C Interval: 45.0 Deg  
 Test Speed: High  
 Temperature:  
 Operators:  
 Test Date: 2025/12/25 19:24:52

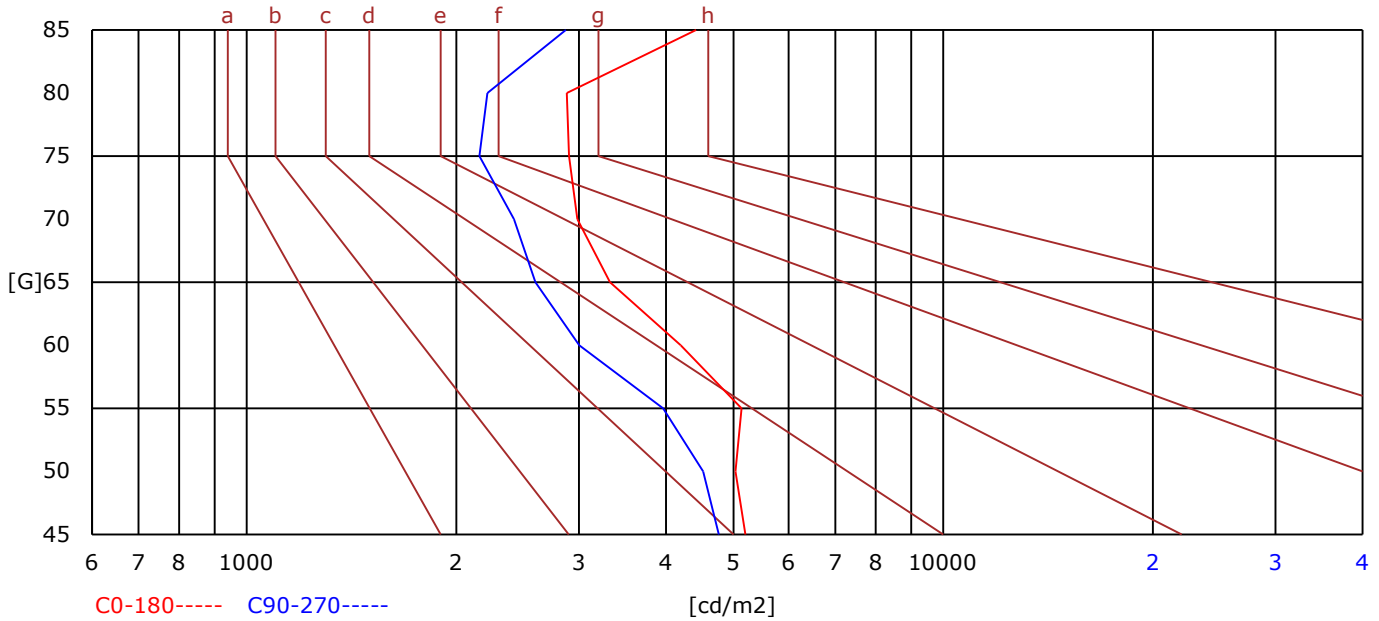
G Range: 0 - 90 Deg  
 G Interval: 1.0 Deg  
 Test System: Huipu CPM-2000B Goniophotometer  
 Humidity:  
 Test Distance: 7.91 m  
 Remarks:

Report No.:

Test Time: 2025/12/25 19:24:52

### BRIGHT LIMIT DIAGRAM

C/G	45	50	55	60	65	70	75	80	85
C0	5202	5033	5137	4198	3326	2984	2902	2883	4419
C90	4766	4524	3962	3004	2597	2421	2158	2218	2872
Dazzle	Quality	Illuminance	---	---	---	---	---	---	---
1.15	A	2000	1000	500	<=300				
1.5	B		2000	1000	500	<=300			
1.85	C			2000	1000	500	<=300		
2.2	D				2000	1000	500	<=300	
2.55	E					2000	1000	500	<=300
---	---	a	b	c	d	e	f	g	h



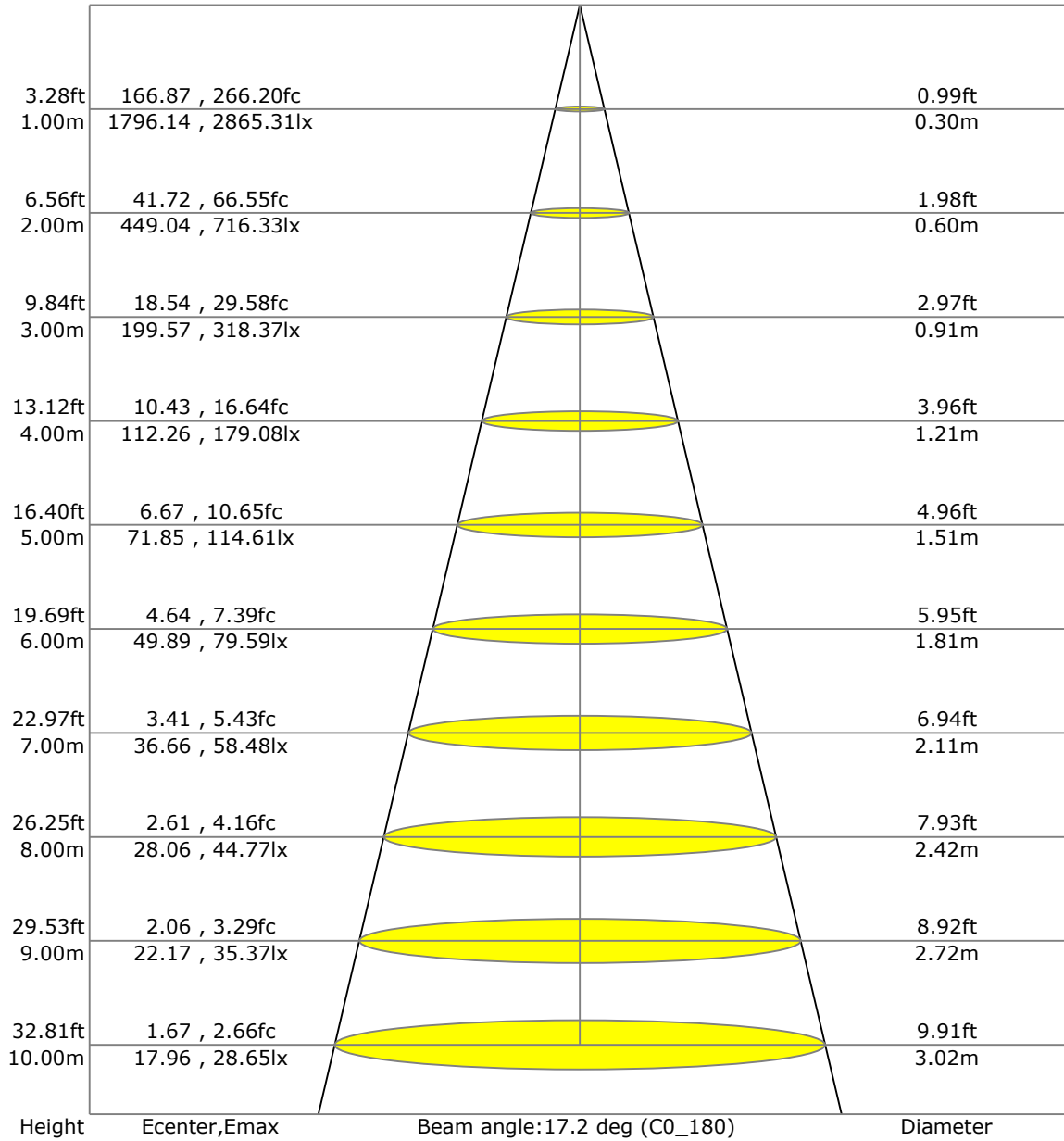
C Range: 0 - 360 Deg  
C Interval: 45.0 Deg  
Test Speed: High  
Temperature:  
Operators:  
Test Date: 2025/12/25 19:24:52

G Range: 0 - 90 Deg  
G Interval: 1.0 Deg  
Test System: Huipu CPM-2000B Goniophotometer  
Humidity:  
Test Distance: 7.91 m  
Remarks:

Report No.:

Test Time: 2025/12/25 19:24:52

### LX-DISTANCE DIAGRAM



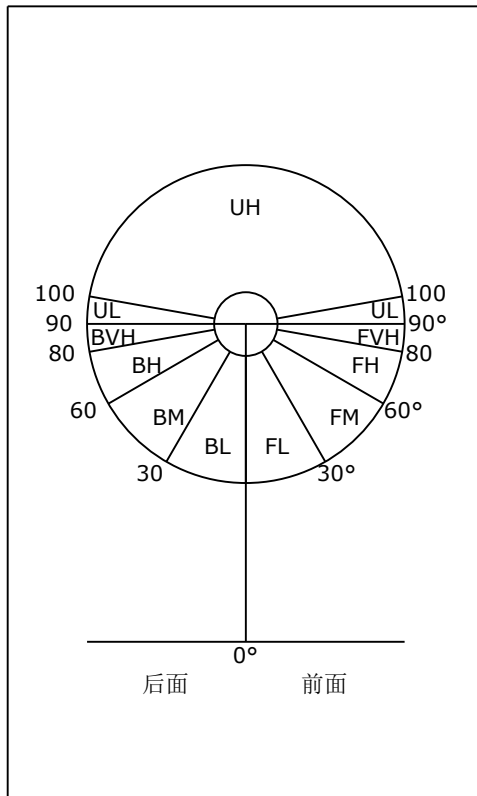
C Range: 0 - 360 Deg  
C Interval: 45.0 Deg  
Test Speed: High  
Temperature:  
Operators:  
Test Date: 2025/12/25 19:24:52

G Range: 0 - 90 Deg  
G Interval: 1.0 Deg  
Test System: Huipu CPM-2000B Goniophotometer  
Humidity:  
Test Distance: 7.91 m  
Remarks:

Report No.:

Test Time: 2025/12/25 19:24:52

### BUG等级评价表



区域	光通量(lm)	光通量(%)
前面	252.7	55.5
FL (0°-30°)	222.3	48.8
FM (30°-60°)	26.2	5.8
FH (60°-80°)	3.5	0.8
FVH (80°-90°)	0.7	0.1
后面	202.8	44.5
BL (0°-30°)	178.7	39.2
BM (30°-60°)	20.2	4.4
BH (60°-80°)	3.3	0.7
BVH (80°-90°)	0.6	0.1
上面	0.0	0.0
UL (90°-100°)	0.0	0.0
UH (100°-180°)	0.0	0.0
限制光	NA	NA

BUG评价等级(基于TM-15-07)	
非对称灯具 (Type I , II , III , IV)	B1 U0 G0
对称灯具 (Type V , Area Light)	B1 U0 G0

C Range: 0 - 360 Deg  
C Interval: 45.0 Deg  
Test Speed: High  
Temperature:  
Operators:  
Test Date: 2025/12/25 19:24:52

G Range: 0 - 90 Deg  
G Interval: 1.0 Deg  
Test System: Huipu CPM-2000B Goniophotometer  
Humidity:  
Test Distance: 7.91 m  
Remarks:

Report No.:

Test Time: 2025/12/25 19:24:52

## UGR(Unified Glare Rating) TABLE

RHOCC	70	70	50	50	30	70	70	50	50	30
RHOW	50	30	50	30	30	50	30	50	30	30
RHOF	20	20	20	20	20	20	20	20	20	20
Room Size X Y	Viewed Endwise					Viewed Crosswise				
2H 2H	10.81	10.88	11.01	11.06	11.31	10.77	10.84	10.97	11.02	11.27
3H	10.86	10.92	11.06	11.12	11.36	10.82	10.88	11.03	11.08	11.32
4H	10.86	10.92	11.07	11.12	11.37	10.82	10.89	11.03	11.08	11.33
6H	10.85	10.91	11.06	11.11	11.37	10.81	10.88	11.03	11.08	11.33
8H	10.84	10.90	11.06	11.11	11.36	10.80	10.87	11.02	11.07	11.32
12H	10.83	10.89	11.05	11.10	11.36	10.79	10.86	11.01	11.06	11.32
4H 2H	11.84	11.90	12.05	12.10	12.35	11.78	11.84	11.99	12.04	12.29
3H	12.00	12.06	12.22	12.27	12.52	11.93	12.00	12.16	12.21	12.46
4H	12.03	12.10	12.26	12.31	12.57	11.97	12.04	12.20	12.25	12.51
6H	12.04	12.11	12.28	12.33	12.59	11.98	12.05	12.22	12.27	12.54
8H	12.04	12.10	12.28	12.33	12.60	11.98	12.05	12.23	12.27	12.54
12H	12.03	12.09	12.28	12.32	12.60	11.97	12.04	12.22	12.27	12.54
8H 4H	12.25	12.32	12.47	12.52	12.78	12.14	12.21	12.36	12.41	12.67
6H	12.71	12.78	12.97	13.01	13.29	12.60	12.66	12.86	12.90	13.18
8H	12.73	12.79	13.00	13.04	13.32	12.62	12.68	12.88	12.93	13.21
12H	12.74	12.80	13.01	13.05	13.34	12.63	12.69	12.90	12.95	13.23
12H 4H	12.90	12.97	13.15	13.20	13.47	12.75	12.81	13.00	13.04	13.31
6H	13.04	13.10	13.30	13.34	13.62	12.88	12.94	13.14	13.18	13.46

C Range: 0 - 360 Deg

C Interval: 45.0 Deg

Test Speed: High

Temperature:

Operators:

Test Date: 2025/12/25 19:24:52

G Range: 0 - 90 Deg

G Interval: 1.0 Deg

Test System: Huipu CPM-2000B Goniophotometer

Humidity:

Test Distance: 7.91 m

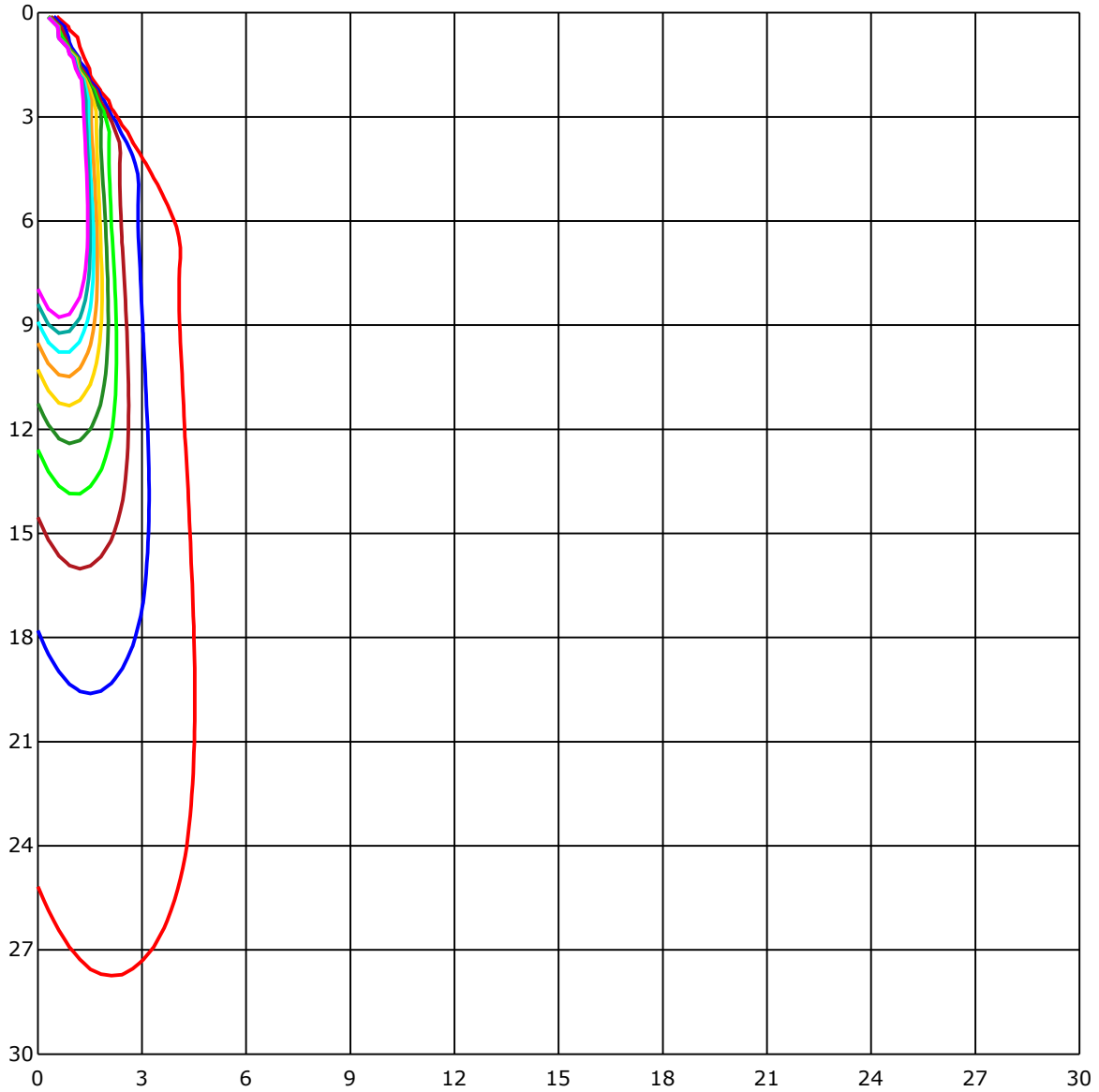
Remarks:



Report No.:

Test Time: 2025/12/25 19:24:52

### SPACE ISOLX DIAGRAM



Unit of illumination:lx

- |          |          |
|----------|----------|
| — 28.348 | — 14.174 |
| — 25.513 | — 11.339 |
| — 22.678 | — 8.504  |
| — 19.844 | — 5.67   |
| — 17.009 | — 2.835  |

C Range: 0 - 360 Deg

C Interval: 45.0 Deg

Test Speed: High

Temperature:

Operators:

Test Date: 2025/12/25 19:24:52

G Range: 0 - 90 Deg

G Interval: 1.0 Deg

Test System: Huipu CPM-2000B Goniophotometer

Humidity:

Test Distance: 7.91 m

Remarks:

Report No.:

Test Time: 2025/12/25 19:24:52

**LUMINOUS DISTRIBUTION INTENSITY DATA**

Gamma\C	C0	C45	C90	C135	C180	C225	C270	C315	C360	
G0	1796.14	2691.05	2483.58	2081.02	1796.14	2691.05	2483.58	2081.02	1796.14	
G1	1945.18	2791.23	2579.0	2013.32	1619.83	2568.73	2361.13	2112.42	1945.18	
G2	2065.81	2865.12	2634.43	1905.64	1423.3	2399.42	2203.27	2102.91	2065.81	
G3	2155.47	2865.31	2637.25	1762.36	1232.72	2191.45	2007.0	2051.42	2155.47	
G4	2198.77	2783.09	2579.62	1596.93	1056.4	1969.14	1793.83	1969.27	2198.77	
G5	2202.52	2664.4	2452.79	1423.36	904.36	1727.26	1576.97	1851.52	2202.52	
G6	2170.93	2532.69	2287.18	1239.47	777.78	1472.92	1352.6	1704.36	2170.93	
G7	2106.79	2369.83	2112.17	1065.22	677.17	1234.41	1133.86	1543.31	2106.79	
G8	2013.57	2173.3	1920.09	923.51	595.02	1033.19	950.97	1371.12	2013.57	
G9	1888.43	1959.26	1699.79	805.63	523.57	860.56	804.25	1191.86	1888.43	
G10	1736.95	1711.18	1464.28	704.58	464.57	725.54	687.69	1013.42	1736.95	
G11	1549.87	1443.76	1238.85	617.61	417.14	623.93	592.77	871.76	1549.87	
G12	1358.04	1197.37	1046.51	545.47	377.54	545.34	518.0	757.32	1358.04	
G13	1173.84	1001.47	886.46	486.4	343.87	478.33	457.37	657.4	1173.84	
G14	1006.41	843.11	754.57	436.1	315.34	421.21	407.13	573.94	1006.41	
G15	862.31	715.97	651.4	392.87	291.63	376.1	365.59	508.93	862.31	
G16	745.5	617.92	569.24	356.83	273.61	341.31	332.24	455.5	745.5	
G17	652.27	541.78	499.92	327.17	258.47	311.71	304.64	407.19	652.27	
G18	574.5	475.33	443.36	300.58	245.39	287.69	282.5	365.96	574.5	
G19	508.62	420.58	398.25	278.3	234.63	269.79	265.41	333.99	508.62	
G20	454.62	376.28	361.02	261.16	224.49	255.4	250.27	309.71	454.62	
G21	410.32	341.56	328.29	246.71	215.92	243.01	237.63	288.19	410.32	
G22	372.16	311.53	301.52	234.13	206.47	231.63	226.62	270.48	372.16	
G23	339.56	286.06	280.49	222.55	191.83	222.43	217.3	255.22	339.56	
G24	312.15	268.23	265.04	213.23	162.43	215.73	209.79	243.52	312.15	
G25	288.94	253.21	249.71	204.6	124.45	206.85	201.16	232.63	288.94	
G26	270.04	239.89	236.63	193.02	86.09	188.14	183.83	223.18	270.04	
G27	253.53	228.06	226.0	172.81	54.81	156.61	153.29	216.24	253.53	
G28	240.32	217.92	216.92	139.28	29.22	117.88	115.25	209.85	240.32	
G29	228.75	209.85	208.23	103.36	22.02	84.9	79.77	197.46	228.75	
G30	219.05	199.65	196.28	65.45	20.33	50.49	48.37	168.43	219.05	
G31	210.92	183.39	176.69	36.29	18.71	28.53	26.72	135.08	210.92	
G32	200.91	153.86	143.78	20.84	18.08	22.15	19.52	94.42	200.91	
G33	184.64	115.69	104.55	18.33	17.33	20.15	17.96	62.07	184.64	
G34	154.92	83.47	71.39	16.89	16.21	18.77	16.96	33.79	154.92	
G35	117.44	47.8	39.67	15.95	15.33	17.96	16.33	22.52	117.44	
G36	80.09	25.72	24.03	15.33	14.45	17.21	15.58	20.71	80.09	

C Range: 0 - 360 Deg

C Interval: 45.0 Deg

Test Speed: High

Temperature:

Operators:

Test Date: 2025/12/25 19:24:52

G Range: 0 - 90 Deg

G Interval: 1.0 Deg

Test System: Huipu CPM-2000B Goniophotometer

Humidity:

Test Distance: 7.91 m

Remarks:

Report No.:

Test Time: 2025/12/25 19:24:52

**LUMINOUS DISTRIBUTION INTENSITY DATA(Continue 1)**

Gamma\C	C0	C45	C90	C135	C180	C225	C270	C315	C360	
G37	47.43	18.9	20.96	14.64	14.02	16.21	14.7	19.15	47.43	
G38	26.34	17.14	19.27	13.7	13.51	15.27	13.83	18.4	26.34	
G39	18.9	16.21	18.33	12.95	13.08	14.64	13.33	17.77	18.9	
G40	17.39	15.39	17.64	12.26	12.7	14.08	12.76	16.77	17.39	
G41	16.46	14.89	16.46	11.95	12.51	13.58	12.45	15.77	16.46	
G42	16.02	13.7	15.58	11.58	12.14	13.2	11.95	14.89	16.02	
G43	15.08	13.2	14.52	11.14	11.58	12.76	11.64	14.2	15.08	
G44	14.33	12.64	13.95	11.01	11.14	12.7	11.2	13.89	14.33	
G45	13.64	11.95	13.45	10.95	10.82	11.95	11.07	13.33	13.64	
G46	12.95	11.58	12.95	10.39	10.7	11.58	10.64	12.89	12.95	
G47	12.26	11.58	12.64	10.07	10.57	11.26	10.26	12.51	12.26	
G48	11.95	11.01	12.33	9.76	10.32	10.76	10.07	12.2	11.95	
G49	11.64	10.76	12.01	9.51	9.89	10.82	9.57	11.89	11.64	
G50	11.32	10.51	11.7	9.45	9.32	10.7	9.7	11.51	11.32	
G51	10.82	10.2	11.39	9.32	8.7	10.39	9.32	11.2	10.82	
G52	10.76	9.89	11.07	9.13	8.07	9.89	8.82	10.7	10.76	
G53	10.45	9.57	10.57	8.7	7.45	9.45	8.2	10.76	10.45	
G54	10.2	9.51	10.57	8.07	6.63	8.76	7.57	10.57	10.2	
G55	9.95	9.57	10.32	7.38	6.19	7.88	6.82	10.07	9.95	
G56	9.7	9.13	9.89	6.76	5.82	7.38	6.01	9.57	9.7	
G57	9.82	8.63	9.39	6.13	5.51	6.44	5.26	9.01	9.82	
G58	9.26	8.13	8.82	5.51	5.13	6.07	5.19	8.45	9.26	
G59	8.88	7.57	8.26	5.19	4.88	5.82	4.82	7.76	8.88	
G60	8.45	6.82	7.63	4.88	4.82	5.51	4.5	7.01	8.45	
G61	7.7	6.13	6.57	4.57	4.38	5.19	4.19	6.32	7.7	
G62	7.38	5.38	6.26	4.38	4.19	4.82	3.88	5.69	7.38	
G63	6.57	5.07	5.69	4.0	4.0	4.5	3.69	5.57	6.57	
G64	5.76	4.82	5.57	3.75	3.75	4.25	3.44	5.26	5.76	
G65	5.38	4.57	5.26	3.57	3.38	4.07	3.25	4.94	5.38	
G66	4.94	4.07	4.94	3.32	3.25	3.88	3.13	4.88	4.94	
G67	4.94	4.07	4.63	3.25	3.0	3.63	2.88	4.32	4.94	
G68	4.44	3.75	4.38	3.0	3.13	3.5	2.63	4.13	4.44	
G69	4.25	3.57	4.13	2.88	2.63	3.0	2.44	3.88	4.25	
G70	3.94	3.32	3.88	2.69	2.63	3.0	2.25	3.5	3.94	
G71	3.82	3.13	3.69	2.44	2.38	2.82	2.0	3.5	3.82	
G72	3.38	3.0	3.44	2.25	2.13	2.63	1.88	3.32	3.38	
G73	3.38	2.82	2.94	2.06	2.19	2.44	1.75	3.07	3.38	

C Range: 0 - 360 Deg

C Interval: 45.0 Deg

Test Speed: High

Temperature:

Operators:

Test Date: 2025/12/25 19:24:52

G Range: 0 - 90 Deg

G Interval: 1.0 Deg

Test System: Huipu CPM-2000B Goniophotometer

Humidity:

Test Distance: 7.91 m

Remarks:

